



tel.: +359 2 42 41 325  
e-mail: [site@simonacards.bg](mailto:site@simonacards.bg)  
[www.simonacards.com](http://www.simonacards.com)

---

## Design requirements for Playing cards Box

### Artwork

We accept files in the following formats: PDF (Adobe Acrobat), AI (Adobe Illustrator), PSD (Adobe Photoshop). Other formats will be accepted if the artwork is prepared correctly: JPG, TIFF, GIF or BMP.

### Colors

All files should be supplied in CMYK (Cyan, Magenta, Yellow and Black) Color Mode or with Pantone colors (Solid Coated). All RGB elements or files will be converted to CMYK.

In case of printed material needs to match other printed material's color or previous printed colors we will need a printed sample of the required colors.

### Fonts

Please forward all the fonts that you have used in your artwork. It is preferred that wherever possible all fonts to be converted to outlines/curves.

### Images

The preferred format for any raster graphics is TIFF although we can accept most standard formats JPG, GIF etc. These should be supplied at a minimum of 300 dpi. Anything below this can result in lower quality reproduction of your card when it comes to printing.

It is preferable to use vector elements rather than raster images. It is important especially for companies' logo and text. Please convert all fonts to outlines.

### Adobe Illustrator vCS5 or Lower

We accept EPS and AI files. Please convert all fonts to outline /curves and embed all images.

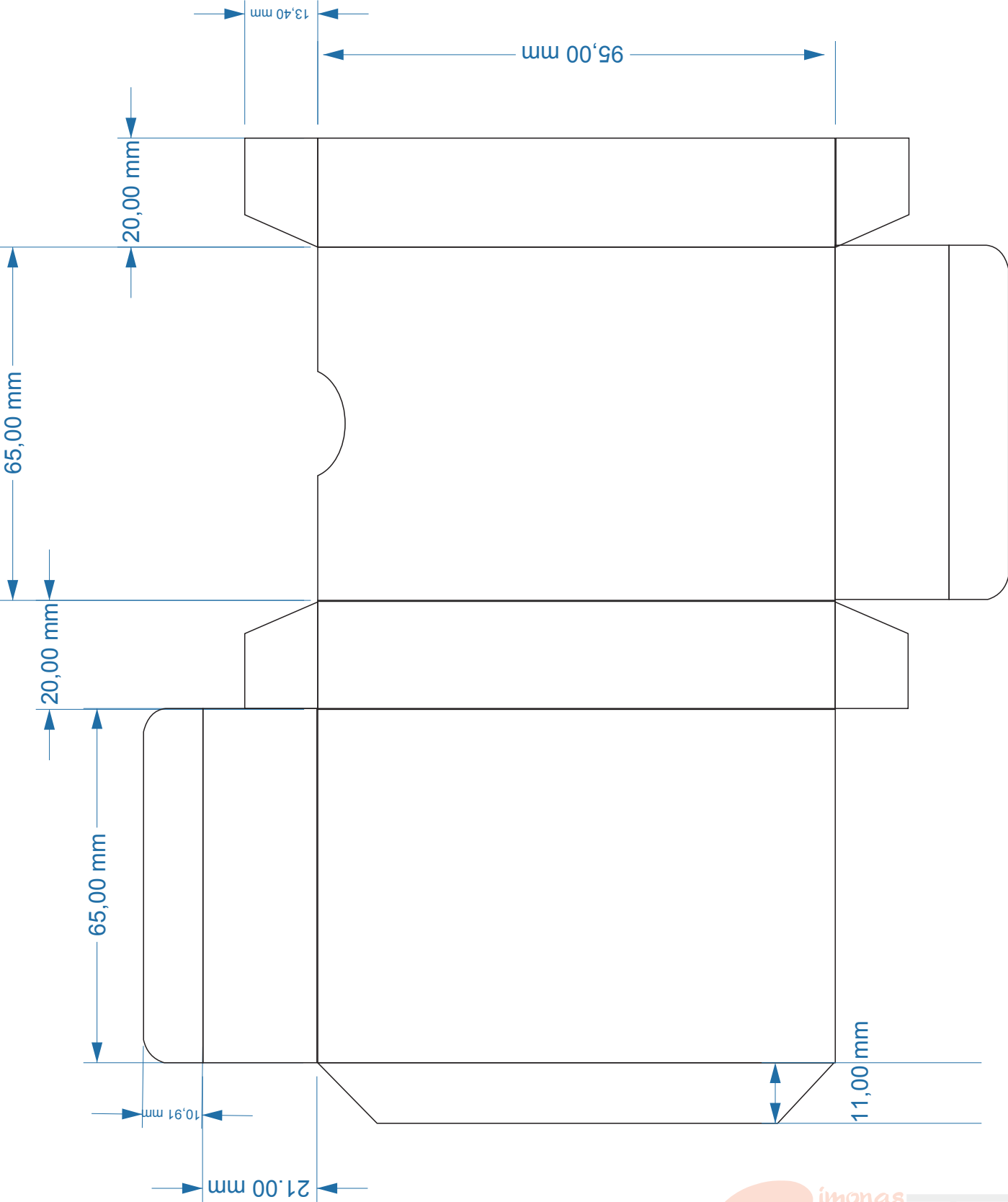
### Adobe Photoshop vCS5 or Lower

Please prepare the artwork no lower than 300 dpi. The file could be saved as TIFF or PSD format.

### CoreIDRAW v15 or Lower

The file could be saved as CoreIDRAW or EPS file. Please convert all fonts to curves and make the artwork no lower than 300 dpi.

# Box Dimensions



\* We can produce a box with custom design and dimensions, if you attach a draft.

